

KEYS CONTRACTOR RESPONSIBILITY:

- KEY TO EXCAVATE AND INSTALL 2-4" HIGH VOLTAGE CONDUITS, 1-4" COMMUNICATION CONDUIT AND 2-TRANSFORMER PADS AS SHOWN ON THE DRAWING.
- KEY TO INSTALL CONDUIT SWEEPS ON THE WEST SIDE OF POLE M4-10-1.
- KEY TO INSTALL TRANSFORMER AS SHOWN ON DRAWING.
- KEYS TO INSTALL SECONDARY STUB-OUTS.
- KEY TO WAIT ON DISPOSAL OF FILL UNTIL KEYS/MCS PROVIDES DIRECTION ON CONTAMINATION.

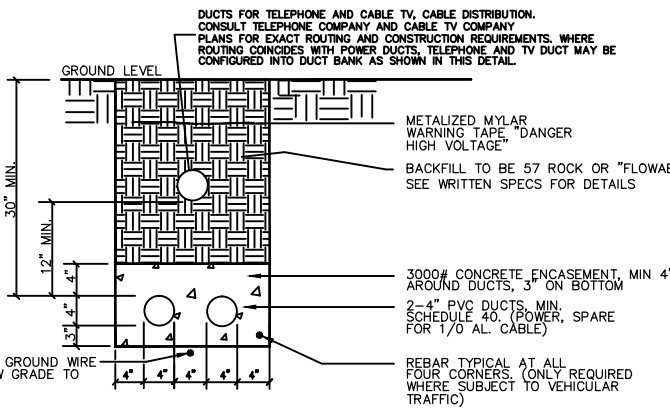
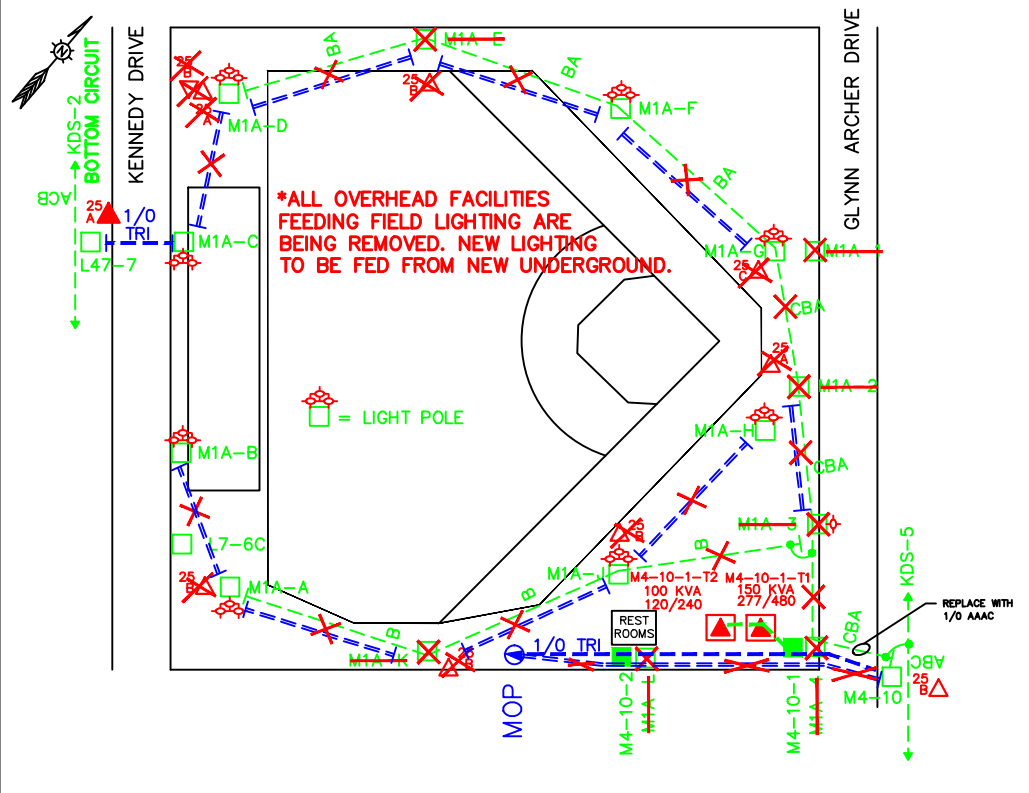
KEYS RESPONSIBILITY:

- KEYS TO REPLACE EXISTING POLE M1A-4 WITH A 35' CONCRETE POLE AS STAKED AND TAG NEW POLE M4-10-2.
- KEYS TO RELOCATE AND REPLACE EXISTING POLE M1A-4 WITH A NEW 45-A POLE AS STAKED. TAG POLE M4-10-1. FRAME OUT THE WEST SIDE OF POLE AND RISE COLUMNS WITH 20 AMP FUSES.
- KEYS TO UPGRADE WOOD DEAD END CROSSARM ON POLE M4-10 WITH A 8' PUPPI CROSSARM AND UPGRADE 3-PHASE #2 PRIMARY TO 1/0 AAC PRIMARY AND EXTEND TO NEW KEYS POLE M4-10-1 AND DEAD END.
- KEYS TO INSTALL 1-150 KVA, 277/480 PADMOUNT TRANSFORMER (M4-10-1-T1) AND 1-100 KVA, 120/240 PADMOUNT TRANSFORMER (M4-10-1-T2) ON NEW PADS AND TERMINATE UNDERGROUND CONDUCTORS AT RISER POLE AND PADMOUNT TRANSFORMERS (CONNECT M4-10-1-T2 TO B PHASE).
- KEYS TO INSTALL NEW 1/0 TRIPLEX FROM EXISTING POLE M4-10 TO NEW POLES AND ON TO EXISTING CUSTOMER POLE TO FEED EXISTING METER CENTER SERVING PORTABLE CLASSROOMS AS SHOWN ON DRAWING.
- KEYS TO INSTALL A 25 KVA TRANSFORMER ON POLE L47-7 AND CONNECT TO A PHASE (ROAD) ON BOTTOM CIRCUIT AND INSTALL NEW 1/0 TRIPLEX FROM POLE L47-7 TO POLE M1A-C TO FEED EXISTING CROWSWALK LIGHT.
- KEYS TO TAG NEW PADMOUNT TRANSFORMERS AS SHOWN ON DRAWING.
- KEYS TO STAKE TRANSFORMER LOCATIONS.
- KEYS TO REMOVE ALL OVERHEAD PRIMARY, SECONDARY, TRANSFORMERS, CROSSARMS AND PRIMARY METERING EQUIPMENT.
- KEYS TO REMOVE POLES M1A-4, M1A-E, M1A-3, M1A-2 AND M1A-1.

CUSTOMER RESPONSIBILITY:

- CUSTOMER TO INSTALL ALL SECONDARY CONDUITS AND CONDUCTORS.
- CUSTOMER TO LABEL ALL SECONDARY CONDUCTORS.
- CUSTOMER RESPONSIBLE TO MAINTAIN A 4' WIDE LEVEL CONCRETE AREA FOR THE WIDTH OF THE TRANSFORMERS AND AREA OUT 12' IN FRONT AND 3' TO THE SIDES AND REAR OF TRANSFORMERS TO REMAIN UNOBSTRUCTED (SEE DETAIL 6).

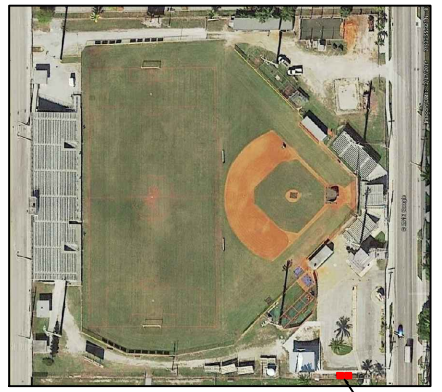
MAXIMUM OF 8 SECONDARY CONDUCTORS PER PHASE



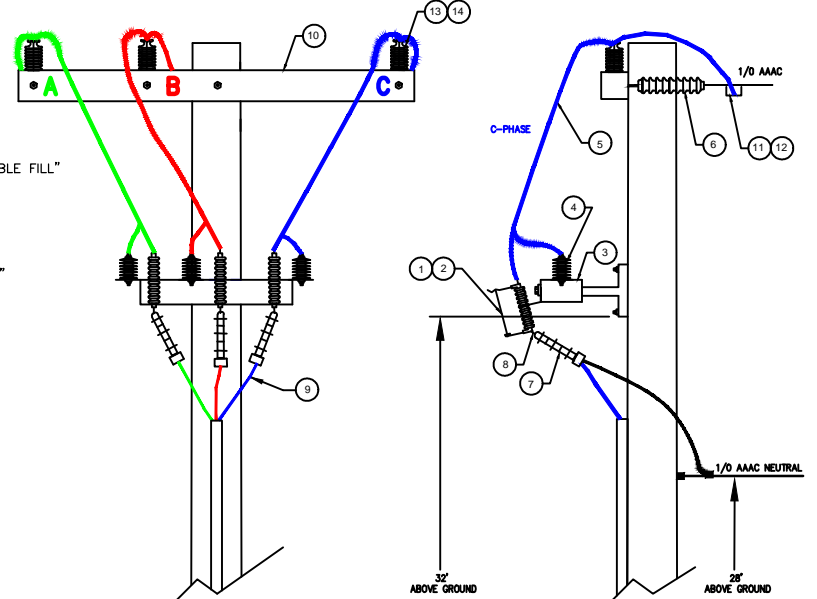
1 TRENCHING DETAIL N.T.S.

BILL OF MATERIAL-UNDERGROUND

ITEM#	DESCRIPTION	STOCK #	QTY
15	LOAD BREAK ELBOW	080-6130	5
16	JACKET SEALING KIT	080-6030	5
17	CLEANING KIT	020-0310	4
18	4" END BELL FITTING	560-4200	8
19	8 HOLE SECONDARY LUG	021-0830	7
20	PADLOCK FOR TRANSFORMER CABINET	080-0160	2
21	100 KVA 120/240 PADMOUNT TRANSFORMER	026-0020	1
22	4" RIGID CONDUIT 10' SECTION	080-0670	1
23	4" PVC MOLD-10' SECTION	020-0320	2
24	POLYMER LUBRICANT, J-WIRE PULLING LUBE	355-0700	1
25	ARRESTOR BUSHING WELL-ELBOW TYPE	080-6140	1
26	150 KVA 277/480 PADMOUNT TRANSFORMER	026-0110	1



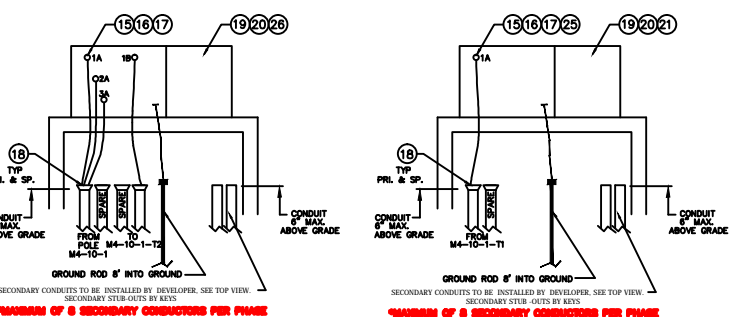
2-NEW PADMOUNT TRANSFORMERS LOCATED HERE



2 NEW RISER POLE M4-10-1 WEST FACE OF POLE N.T.S.
3 RISER POLE M4-10-1 SOUTH FACE OF POLE N.T.S.

BILL OF MATERIAL-RISER POLE

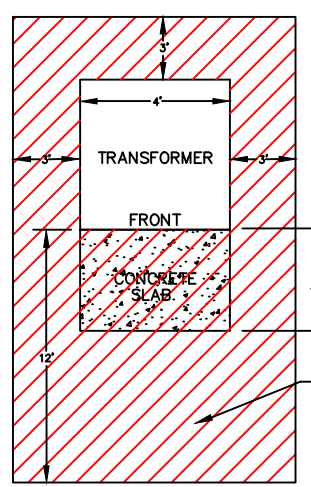
ITEM#	DESCRIPTION	STOCK #	QTY
1	20 AMP KS LINK FUSE	037-0200	3
2	27 KV GUT OUT	022-0070	3
3	THREE PHASE CUT OUT ARRESTER BRACKET	012-0050	1
4	12 KV LIGHTNING ARRESTER	004-0050	3
5	#4 TPR COVERED TAP WIRE	062-0600	30
6	SUSPENSION POLY PACE INSULATOR	033-0230	6
7	3M #7853-S-4 COLD SHRINK TERMINATION KIT	080-6020	3
8	STEM CONNECTOR 3M SC010	080-2800	3
9	1/0 ALUM. 15 KV CABLE	013-0300	A/R
10	8 FT PUPPI DEAD END CROSSARM	003-0160	2
11	WEJTAP STIRRUP 1/0	021-0510	3
12	HOT LINE CLAMP	018-0130	3
13	35 KV PORCELIN INSULATOR	033-0150	3
14	35 KV INSULATOR PIN	033-0170	3



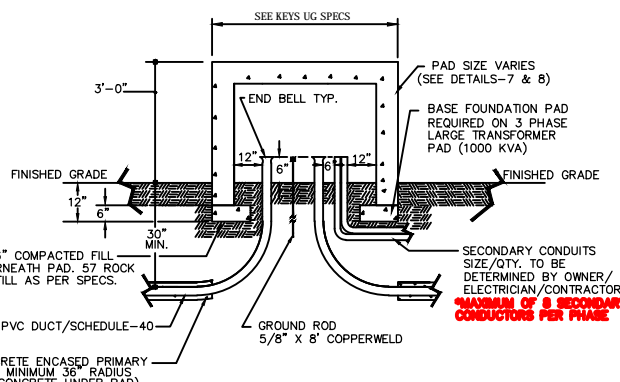
4 SECTION VIEW TRANSFORMER M4-10-1-T1 SCALE: NONE
5 SECTION VIEW TRANSFORMER M4-10-1-T2 SCALE: NONE

TRANSFORMER SIZE AND VOLTAGE

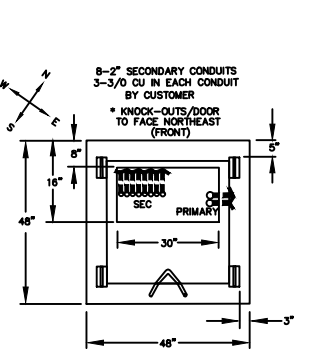
LOCATION	ITEM#	SIZE	SECONDARY VOLTAGE	STOCK #
M4-10-1-T1	150 KVA	277/480	026-0110	
M4-10-1-T2	100 KVA	120/240	026-0020	



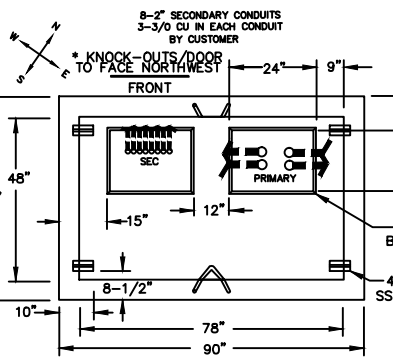
9 TRANSFORMER CLEARANCE SCALE: NONE



6 TYPICAL TRANSFORMER PAD SECTION VIEW N.T.S.



7 TOP VIEW TRANSFORMER M4-10-1-T2 SCALE: NONE



8 TOP VIEW TRANSFORMER M4-10-1-T1 SCALE: NONE

ELEVATION REQUIREMENTS FOR BROOKS BOXES

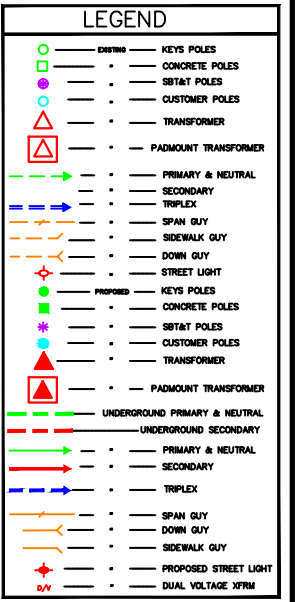
ITEM#	EXISTING GRADE	FINISH GRADE	FEMA ELEVATION	FOUNDATION TOP ABOVE FINISH GRADE	SIZE OF BOX/PAD	SECONDARY CONDUCTORS
M4-10-1-T1	3.4'	4.70'	ZONE AE-7	3'-0"	60" x 90" x 42"	BY CUSTOMER'S CONTRACTOR
M4-10-1-T2	3.4'	4.70'	ZONE AE-7	3'-0"	48" x 48" x 42"	BY CUSTOMER'S CONTRACTOR

CAPITAL ACCOUNT NUMBERS

ON LINE EXPENSE	1-85-284200-05-27202
ON LINE EXPENSE-VEHICOR	1-85-284200-05-27202
ON LINE EXPENSE-VEHICOR	1-85-284200-05-27202
ON LINE EXPENSE-VEHICOR	1-85-284200-05-27202

JOB SPECIFICATIONS

PRIMARY VOLTAGE	7870
SECONDARY VOLTAGE	120/240 & 277/480
PADMOUNT XFMR SIZE	1-100, 1-150 KVA
PADMOUNT XFMR SIZE	1-25 KVA
POLE SIZE & CLASS	1-35, 1-60A
FUSE SIZE FOR U.G.	3-20 AMP
FUSE SIZE FOR PADMOUNT	1-5 AMP
PRIMARY WIRE	1/0 ALUM 15 KV U.G.
SECONDARY WIRE	U.G. BY CUSTOMER
SERVICE WIRE	U.G. BY CUSTOMER
METER REQUIREMENTS	C.T.



JOB COMPLETED AS DESIGNED YES ___ NO ___
 IF NO, STATE REASON: _____
 JOB INSPECTED FOR VIOLATIONS BY LINE SUPERVISOR _____
 SIGNATURE: _____ DATE: _____

D-4238
ER# 2842-16

ENGINEERING DEPT. KEY WEST FL.

NEW 3Ø 277/480 AND 1Ø 120/240 UNDERGROUND SERVICE TO FEED KW HIGH SCHOOL STADIUM 14TH STREET, KEY WEST, FL.

DESIGNED BY: CASSIE DZIATLIK
 APPROVED BY MATTHEW ALFONSO:
 APPROVED BY HAROLD KNOWLES:
 DATE: MAY-9-2016
 DRAWN BY: VIN SMITH
 SCALE: NONE SHEET 1 OF 1